

A Wind Wildlife Research Information System: Resource for Wind Energy Planning and Development

Abby Arnold
AWWI Executive Director

Results

**Through Collaboration
and Transparency**



Mission: American Wind Wildlife Institute



Facilitate timely and responsible development of wind energy while protecting wildlife and wildlife habitat.

www.AWWI.org



AWWI: A Unique Alliance



Members

- AES Wind Energy
- BP Wind Energy
- Clipper Windpower Development
- **enXco***
- **GE Wind Energy***
- **NRG Systems, Inc.**
- Horizon Wind Energy
- **Iberdrola Renewables***
- Pacific Gas & Electric Co.
- Pattern Energy Group
- Renewable Energy Systems Americas
- **Ridgeline Energy, LLC***
- Vestas Americas
- **Association of Fish & Wildlife Agencies***
- Environmental Defense Fund
- **Natural Resources Defense Council***
- **National Audubon Society***
- **The Nature Conservancy***
- The Sierra Club
- **Union of Concerned Scientists***



AWWI Initiatives



Research

- Prioritize & fund urgent research needs
- Create a data repository
- Commit to the highest academic standards

Landscape Assessment Tool

- Landscape Assessment Tool (LAT) of wildlife species data: to be field tested by AWWI members beginning July 1, 2010
- Guide application of GIS data

Mitigation

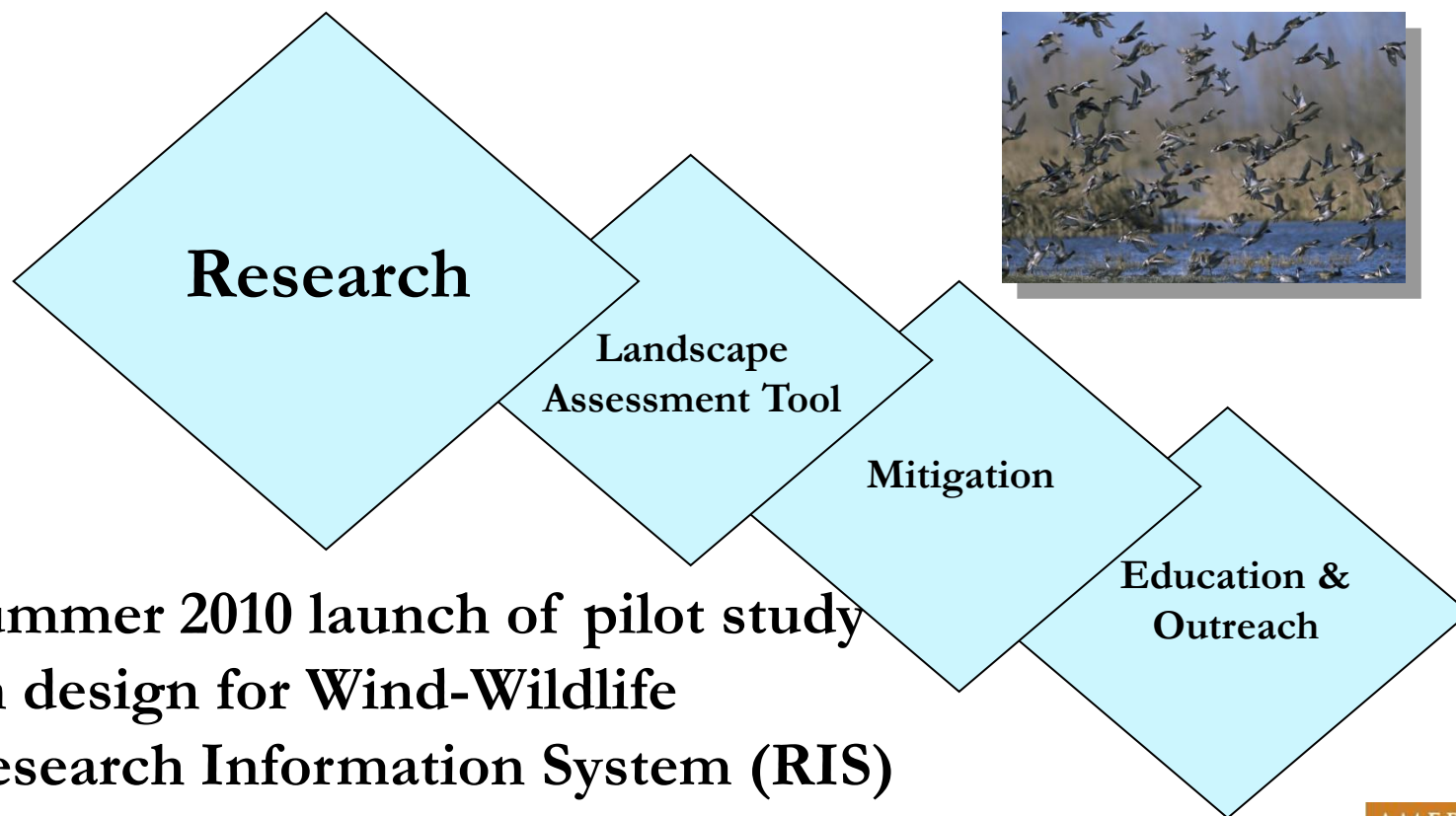
- Cost-effective & beneficial mitigation
- Use science-based criteria
- Explore regional mitigation solutions

Education & Outreach

- Inform public and decision makers
- Sensitize Industry and NGO to mutual benefits
- Industry & NGO training



AWWI: Research Information System



- Summer 2010 launch of pilot study on design for Wind-Wildlife Research Information System (RIS)
- RIS will have capability to analyze and protect different types of data across the entire industry.

NAS on Policy and Information Needs



- ...National-level energy policies (implemented through ...incentives, subsidies, research agendas, and federal regulations and guidelines)
 - to enhance the benefits of wind energy while minimizing negative impacts
 - would help in planning and regulating wind-energy development at smaller scales.

» National Academy of Sciences, 2007

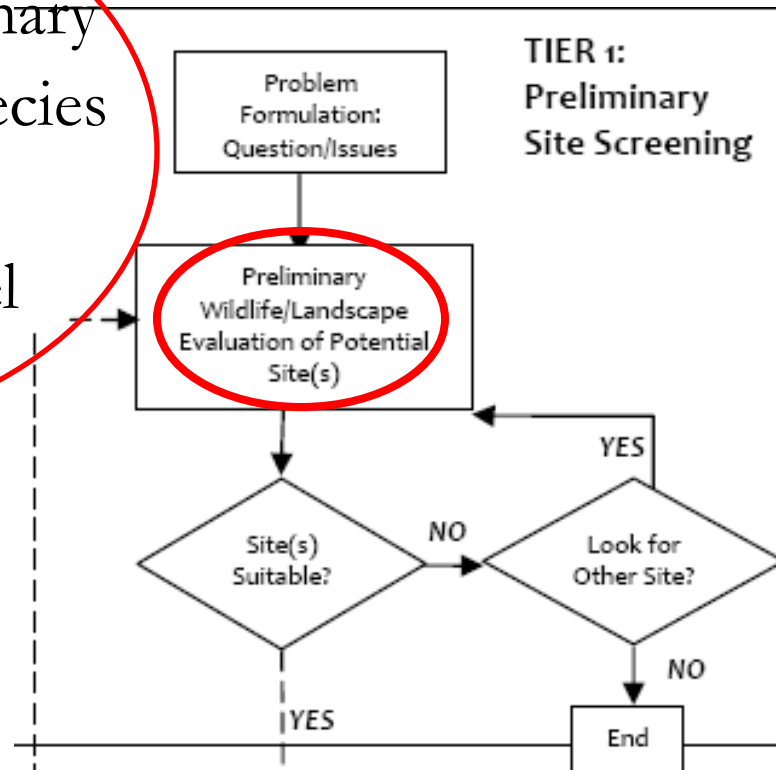


Wind Turbine Federal Advisory Committee Recommendations to FWS/Dept of Interior



- New national framework for siting wind

– Tier 1 Preliminary
evaluation of species
and habitat
at landscape level



AWWI RIS: The Answer to Information Needs



- Increase certainty – better define level of risk
- Ability to predict and address “risk”

*Expand collective understanding amongst stakeholders
(agencies, developers, NGO's, communities) to site
facilities*



AWWI RIS: Address Limits of Our Wind/Wildlife Knowledge



- Approximately \$400,000 for monitoring studies of species and habitat for every 100 MW in the ground
- Not part of ‘peer-reviewed’ scientific literature
- Goal is to leverage value of millions spent on past studies, and....



AWWI Research Information System: Data Imperatives



- Electronic, web based data base with full protection of proprietary data

- Collect and analyze pre & post construction monitoring studies
- Incorporation of formal scientific research



*Maximize scientific value to improve
overall understanding*



AWWI RIS: Answer to Information Needs



- With consolidation of studies
 - Prioritize questions to be studied
 - Minimize duplication of effort through wide-ranging and comprehensive analysis of data
 - Improve prediction of risk
 - Cost efficiency

*Enhance scientific understanding to inform
planning and permitting*



AWWI RIS: Secured Viewing



- Member benefits

- Access to the best and most consistent data on wind/wildlife interaction



- Improved decision making by Members on which sites to pursue and permit

- Current information on what is being researched along with research results



AWWI: RIS Characteristics



Want to hear from Members, what would be useful?

- Link to existing sources of publicly available studies?
- Access to grey literature?
- Promote common data collection and exchange protocols across wind-wildlife projects?
- Maintain a centralized source of detailed data sets and metadata to facilitate broader scale analyses



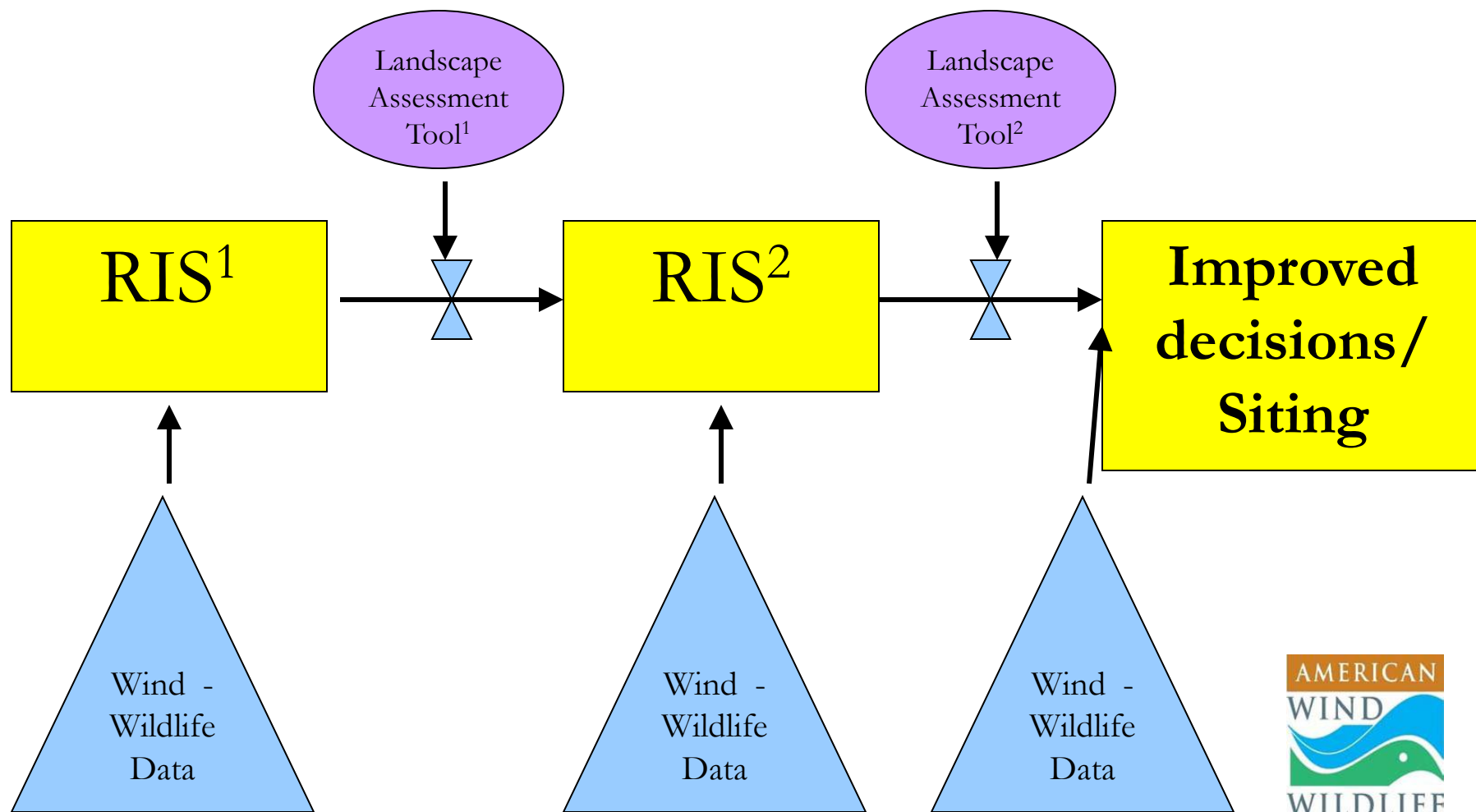
AWWI: Enable Effective & Efficient Siting



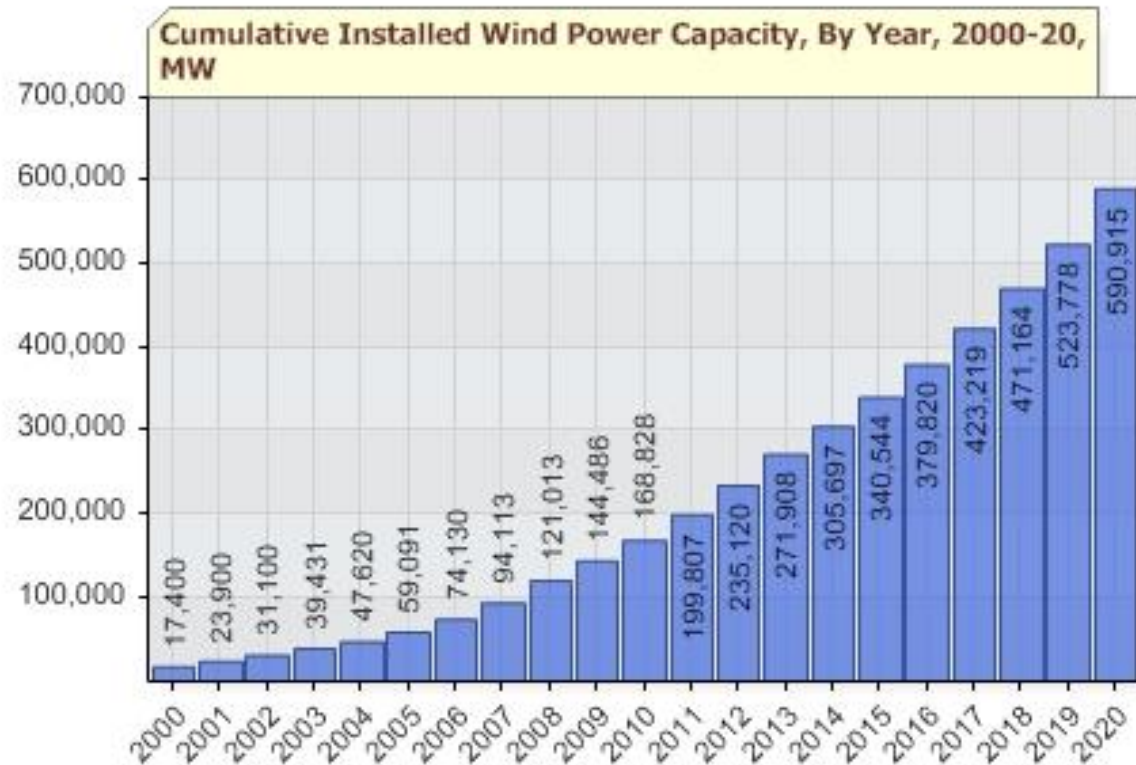
- Bringing together necessary data to make better decisions – site successfully
- increase understanding
 - Better evaluate collision risk
 - Better evaluate habitat effects
 - Better predictability to minimize effects
 - Better regional analyses
 - Better prioritization of future research needs



AWWI: Connecting Information to Siting



AWWI: Reaching New Heights



Research questions?

Contact Dr. Judd Howell, Director of Research and Evaluation

[Email: jhowell@awwi.org](mailto:jhowell@awwi.org)

Website:
www.awwi.org

